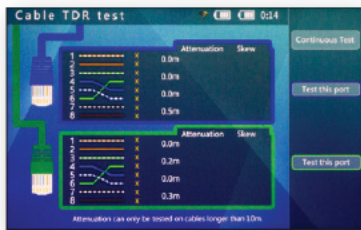
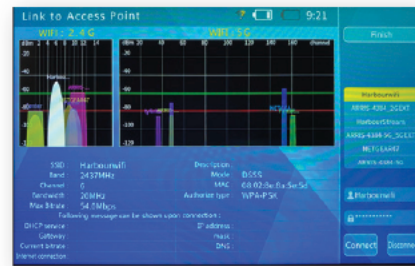


8075 CamView IP Pro-X Security Camera Tester

Security Camera Tester with advanced cable & network capabilities

Features:

- 7" touchscreen with WiFi
- Works with SD Analog, AHD 3.0, HD-CVI 3.0, HD-TVI 3.0, H.264, H.265 IP, NTCS/PAL, and all ONVIF enabled IP cameras
- USB, BNC, RJ45 and HDMI ports
- 7" TFT touchscreen (1920 x 1200), 16.7M colors
- WiFi for connecting to WiFi cameras and to create a WiFi hotspot
- 25W PoE and 12VDC camera outputs
- Built-in DHCP server to set up IP cameras before the network is even wired
- RS485 PTZ Control
- Network Testing includes: Network Sniff, Subnet List and Ping Test
- TDR and RJ45 Cable Test
- Built-in Video Test Image Generator
- Comes complete with (2) Li-ion batteries, Universal AC adapter/charger with 4 plugs, Ethernet cable, BNC/BNC cable, micro USB to USB cable, RS485 cable with extra screw terminal, audio cable, 12V camera power cable, lanyard and carrying case



TDR Function

Check the condition of RJ45 cable pairs (normal, open, short) and perform a cable-length measurement test using TDR. (Time Domain Reflection)



Automatically detects if the camera needs to be supplied with POE when an IP camera is directly connected to Network Port 1. Network Port 2 accepts POE to test the POE output of installed PSE network devices. The Tester can be used to check audio signal functionality which is input on the Tester's audio input jack.

Ordering Information:

8075 CamView IP Pro-X 7" IP Security Camera Tester
37-99 7.4V 18.5Wh Lithium Ion Battery

Supports RF Spectrum Testing

Supports RF Spectrum Testing, WIFI Testing, and Signal monitoring @2.4G, 5G bandwidths. This can be effective in detection of WIFI signal interference and determining if the data channel is being blocked or has conflicts. Signal Strength Detection can help technicians find the most suitable location and direction for WIFI connections by quickly detecting the signal strength.



Dual Rechargeable Batteries

The Tester can provide 12VDC (not to exceed 2A) to power the camera from dual rechargeable batteries. Cameras with a RS485 port for PTZ control can be tested. It can display the analog video signal input from an attached analog camera or video source with AHD 1.0 or TVI 2.0 format video output, and HD-CVI 2.0 or AHD 2.0, CVI 3.0, or TVI 3.0.

8075 CamView IP Pro-X Security Camera Tester

The CamView IP Pro-X is designed for the installation and maintenance of analog SD, analog HD and network HD video surveillance systems

Specifications

IPC Protocol	ONVIF, RTSP, RTP
Ethernet Test	10/100M/1G detect; Loop detect; DHCP client & server; traffic detect; datalink quality detect
IPC Test	Discover the device, real time video, camera config, PTZ test, discover ONVIF device
WiFi Test	S Support 2.4G & 5G; WiFi connection; WiFi list; Delay detection; packet loss rate test
Spectrum Test	Spatial frequency band signal scanning & detection; spatial noise signal detection
POE Test Power	PSE test -The tester supplies power (25W) / PD test-receives the power (802.3af/802.3at)
Analog Video Test	NTSC/PAL/HD-CVI 3.0/AHD 3.0/HD-TVI 3.0 Video In/Out BNCs; supports 8 level digital zoom
HDMI Signal Test	Can receive 720p, 1080p Can transmit various test images 720p & 1080p
12V Power Output	12V/2A output interface
TDR Test	Test network cable (4 pair) length; Max 427 to 656ft (130 to 200m); Accuracy 3.3ft (1m)
Coaxial PTZ Control Test	CVI protocol (Dahua); AHD protocol (Pelco c); TVI protocol (Hikvision)
485 PTZ test	More than 30 protocols
Display	7" TFT touchscreen , 1920 x 1200, 16.7M colors
Power	(2) Lithium-ion batteries; 10 hour work time
Dimensions/Weight	9.3 x 5.2 x 1.8" (236.5 x 133.4 x 45.4mm) / 2lbs (907g)